

MD16

4-direction lateral stacker for long loads and narrow corridors



A RICHIESTA

360° MOBILITY

MD16 lateral stacker is the ideal solution for handling of large goods dimensions in narrow spaces and to maximise the possibility of storing goods. Optimum for use in narrow corridors thanks to the transverse direction of travel, particularly suitable for transport of long loads.

STRENGTHS:

- Central tiller arm for **better transversal driving position** on both sides of the machine, during transversal direction of travel and during "traditional" travel
- **Electric steering system** for better manoeuvrability
- Intuitive and easily accessible **proportional hydraulic controls** (on control box)
- **Large FEM plate** for fork positioning outside the stabilisers and to **handle long loads** (upon request)
- Powerful **2 KW AC electric traction motor** with **CAN BUS** technology, with **speed control** on flat surfaces, uphill and downhill. Energy recovery for **longer battery life**.

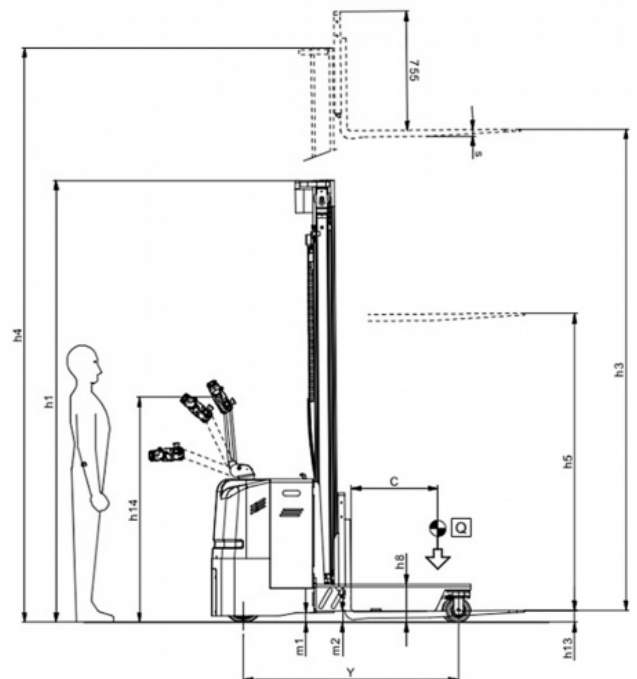
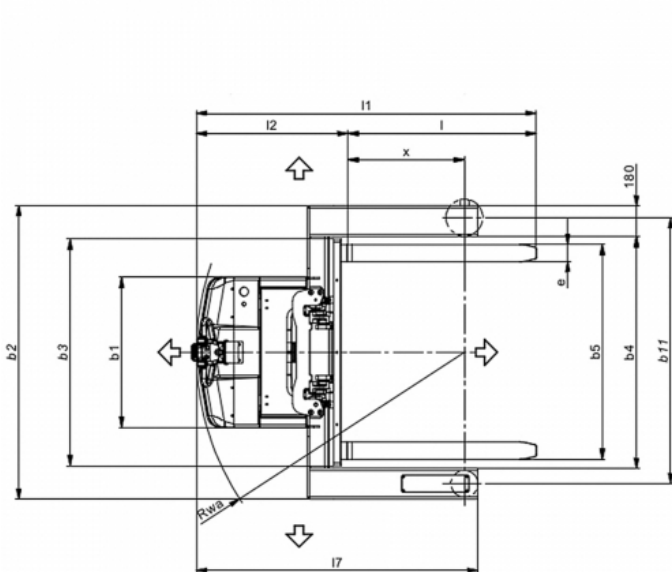
✓ **LOAD CAPACITY UP TO 1.600 KG**

✓ **SPECIAL DIMENSIONS UPON REQUEST**

SOME OPTIONALS

-  **METALLIC/GALVANISED VERSION**
-  **LITHIUM BATTERY**
-  **SCALE/PRINTER**
-  **USE IN COLD STORE**

Type	Stacker trucks	Class	4-way stacker trucks
Load capacity (Kg)	1600	Lifting capacity (mm)	5600



Characteristics

	1.1	Manufacturer			SAMAG
Characteristics	1.2	Manufacturer's type designation			MD 16
	1.3	Drive: electric (battery or mains), diesel, petrol, fuel gas			elettrico
	1.4	Operator type: hand, pedestrian, standing, seated, order-picker			uomo a terra
	1.5	Load capacity/rated load	Q	t	1,6
	1.6	Load centre distance	C	mm	600
	1.8	Load distance, centre of drive axle to fork	x	mm	681 (1)
	1.9	Wheelbase	Y	mm	1363
Weight	2.1	Service weight (battery included)		Kg	1550 (2)
	2.2	Axle loading, laden (front / rear)		Kg	1200 / 1950
	2.3	Axle loading, unladen (front / rear)		Kg	1050 / 500
Wheels and frame	3.1	Tyres: solid rubber, superelastic, pneumatic, polyurethane			Vu-Pu
	3.2	Tyre size, front		mm	Ø 257x80
	3.3	Tyre size, rear		mm	Ø 150x60
	3.5	Wheels, number front rear (x = driven wheels)			1x/2
	3.7	Tread, rear	b11	mm	1610
Dimensions	4.2	Height, mast lowered	h1	mm	vedi tabella
	4.4	Lift	h3	mm	vedi tabella
	4.5	Height, mast extended	h4	mm	vedi tabella
	4.9	Height of tiller in drive position (min. / max.)	h14	mm	1050/1427
	4.10	Height of whell arms	h8	mm	240
	4.15	Height of forks from ground	h13	mm	75
	4.19	Overall length	l1	mm	2082 (1)
	4.20	Lenght of face of forks	l2	mm	882 (1)
	4.21	Overall width	b1 / b2	mm	880/1710
	4.22	Fork dimensions	s/e/l	mm	40 / 100 / 1200
	4.23	Piastra porta forche ISO2328, classe/tipo			2/B
	4.24	Fork - carriage width	b3	mm	1320
	4.25	External fork widths	b5	mm	1250
	4.26	Larghezza tra longheroni / piattaforme carico	b4	mm	1350
	4.31	Ground clearance, laden, below mast	m1	mm	60
	4.32	Ground clearance, centre of wheelbase	m2	mm	70
4.35	Turning radius	Wa	mm	1563	
4.37	Length across wheel arms	l7	mm	1641	
Performance	5.1	Travel speed (laden / unladen)		Km/h	6 / 6
	5.2	Lift speed (laden / unladen)		m/s	0,11 / 0,23
	5.3	Lowering speed (laden / unladen)		m/s	0,34 / 0,24
	5.8	Max. gradeability (laden / unladen)		%	-
	5.10	Service brake			elettronico
Electric motor	6.1	Traction motor, power KB 60'		KW	2 AC
	6.2	Lifting motor, performance 15% ED		KW	2,5
		Steering motor		KW	0,3
	6.3	Battery DIN 43531/35/36 A, B, C,			yes
	6.4	Tension / nominal capacity		V / Ah	24 / 320-500
Other data	6.5	Battery weight (± 5%)		Kg	267-366
	8.1	Control type			Electric AC
	8.4	Sound level at the driver's ear according to DIN 10 053		dB/(A)	<70

(1) Per la versione TV/TVL aggiungere 23 mm su I1 ed I2 e togliere 23 mm su x

(2) Dati tecnici riferiti alla configurazione con montante duplex DV H = 4000 mm e batteria da 320 Ah

Overall dimensions

TYPE	OVERALL DIMENSIONS OF LIFTING GROUPS							
	SOLLEVAMENTO	h3	h2	h5	L2	h1	h4	h4 Griglia
DUPLEX "DV"	2500	2430	-	-	882	1880	3095	3260
	3000	2930	-	-	882	2130	3595	3760
	3500	3430	-	-	882	2380	4095	4260
	4000	3930	-	-	882	2630	4595	4760
DUPLEX "DVL"	2500	2445	-	1230	882	1780	2995	3160
	3000	2945	-	1480	882	2030	3495	3660
	3500	3445	-	1730	882	2280	3995	4160
	4000	3945	-	1980	882	2530	4495	4660
TRIPLEX "TV"	4200	4155	-	-	882	1980	4750	4915
	4800	4695	-	-	882	2160	5290	5455
	5200	5145	-	-	882	2310	5740	5905
	5600	5595	-	-	882	2460	6190	6355
TRIPLEX "TVL"	4200	4170	-	1400	882	1980	4750	4915
	4800	4710	-	1580	882	2160	5290	5455
	5200	5160	-	1730	882	2310	5740	5905
	5600	5610	-	1880	882	2460	6190	6355

(1) Per la versione TV/TVL aggiungere 23 mm su l1 ed l2 e togliere 23 mm su x
(2) Dati tecnici riferiti alla configurazione con montante duplex DV H = 4000 mm e batteria da 320 Ah