



MINIMUM OVERALL DIMENSIONS, MAXIMUM PERFORMANCE AND VISIBILITY

Tiller arm and relevant drive wheel placed in the central part of the pallet truck ensure the operator the maximum benefits in terms of:

- **safety**
- **stability**
- **manoeuvrability** (steering angle 200°)

The spring loaded steering system allows to keep a constant contact of the drive wheel with the floor, excellent stability of the pallet truck and a minimum steering effort even when the pallet truck is fully loaded.

Brushless traction motor with AC technology allows excellent efficiency and speed control on flat surfaces, uphill and downhill, and minor maintenance interventions. Maximum battery life and efficiency. Button for slow functions.

✓ **LOAD CAPACITY UP TO 2.000 KG**

✓ **SPECIAL DIMENSIONS UPON REQUEST**

SOME OPTIONALS



OPERATOR TRANSPORT PLATFORM



METALLIC/GALVANISED VERSION



LITHIUM BATTERY

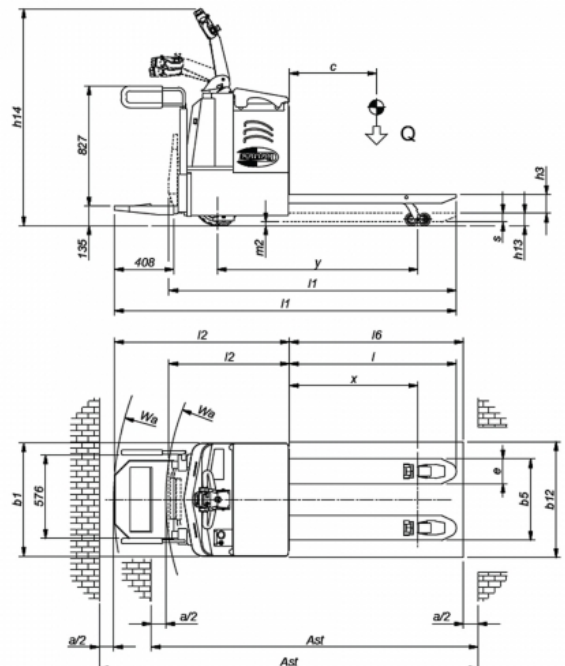
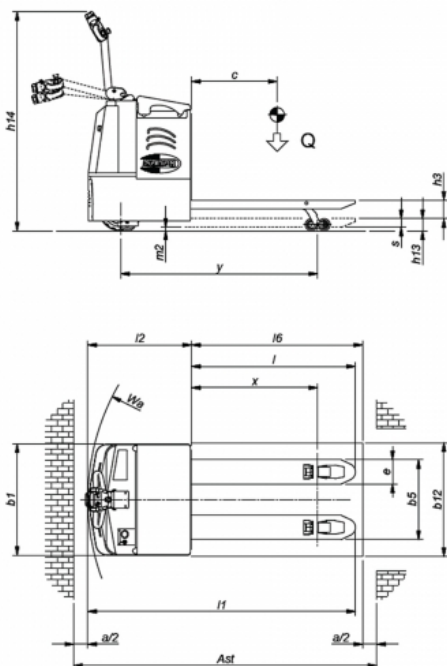


SCALE/PRINTER



USE IN COLD STORE

Type	Power pallet trucks	Class	Power pallet trucks for non-intensive use
Load capacity (Kg)	2000	Lifting capacity (mm)	130



Characteristics

	1.1	Manufacturer	SAMAG		
				TM 20	TM 20 P.O.
Characteristics	1.2	Manufacturer's type designation		TM 20	Battery
	1.3	Drive: electric (battery or mains), diesel, petrol, fuel gas			seated
	1.4	Operator type: hand, pedestrian, standing, seated, order-picker		pedestrian	seated
	1.5	Load capacity/rated load	Q	t	2
	1.6	Load centre distance	C	mm	600
	1.8	Load distance, centre of drive axle to fork	x	mm	856 (2)
Weight	1.9	Wheelbase	Y	mm	1288 (2)
	2.1	Service weight (battery included)		Kg	610
	2.2	Axle loading, laden (front / rear)		Kg	898 / 1712
Wheels and frame	2.3	Axle loading, unladen (front / rear)		Kg	500 / 110
	3.1	Tyres: solid rubber, superelastic, pneumatic, polyurethane			Solid rubber / Vulkollan
	3.2	Tyre size, front		mm	260 x 85 / 125 x 50
	3.3	Tyre size, rear		mm	85x70
	3.5	Wheels, number front rear (x = driven wheels)			1X + 2/4
	3.6	Tread, front	b10	mm	582
	3.7	Tread, rear	b11	mm	390
Dimensions	4.4	Lift	h3	mm	130
	4.8	Seat height / stand height	h7	mm	135
	4.9	Height of tiller in drive position (min. / max.)	h14	mm	952 / 1326
	4.15	Height of forks from ground	h13	mm	85
	4.19	Overall length	l1	mm	1780
	4.20	Length of face of forks	l2	mm	630
	4.21	Overall width	b1/b2	mm	730
	4.22	Fork dimensions	sl/ell	mm	60 x 170 x 1150
	4.25	External fork widths	b5	mm	560
	4.32	Ground clearance, centre of wheelbase	m2	mm	25
Performance	4.34	Aisle width for pallets 800 x 1200 crossways	Ast	mm	2030
	4.35	Turning radius	Wa	mm	1515 (2)
	5.1	Travel speed (laden / unladen)		Km/h	6 / 6
	5.2	Lift speed (laden / unladen)		m/s	0,02 / 0,07
	5.3	Lowering speed (laden / unladen)		m/s	0,11 / 0,05
Electric motor	5.7	Gradeability (laden / unladen)		%	---
	5.8	Max. gradeability (laden / unladen)		%	7 / 17
	6.1	Traction motor, power KB 60'		KW	1,8 AC
	6.2	Lifting motor, performance 15% ED		KW	2,2
		Steering motor		KW	---
Other data	6.3	Battery DIN 43531/35/36 A, B, C,			yes
	6.4	Tension / nominal capacity		V / Ah	24/240 -270
	6.5	Battery weight (± 5%)		Kg	221 - 255
8.4	Sound level at the driver's ear according to DIN 10 053		dB/(A)	<70	

Ast includes "a" (manoeuvring space) = 200 mm

(1) The first value indicates closed platform, second lowered for transporting operator

(2) With forks in rest position, it is increases to 92 mm

(3) Values without operator