



### MAXIMUM STABILITY AND ROBUSTNESS

TM 60 by Samag is an electric pallet truck designed for handling of heavy loads.

### STRENGTHS:

- **Electric steering system** as standard
- Ergonomic **push-button** control box and button for **slow functions**
- **Tiller arm** and relevant drive wheel placed in the central part of the **pallet truck** ensure the operator: **safety, stability, manoeuvrability** (steering angle 200°) and robustness
- **Powerful brushless electric traction motor** with excellent efficiency, **AC technology** and **CAN-bus technology**, that allows speed control on flat surfaces, uphill and downhill, and **minor maintenance interventions**
- **Spring loaded steering system** to keep a constant contact of the drive wheel with the floor, **excellent stability** of the **pallet truck** and a minimum steering effort even when the **pallet truck** is fully loaded.

✓ **LOAD CAPACITY UP TO 6.000 KG**

✓ **SPECIAL DIMENSIONS UPON REQUEST**

### SOME OPTIONALS



OPERATOR TRANSPORT PLATFORM



LITHIUM BATTERY



USE IN COLD STORE

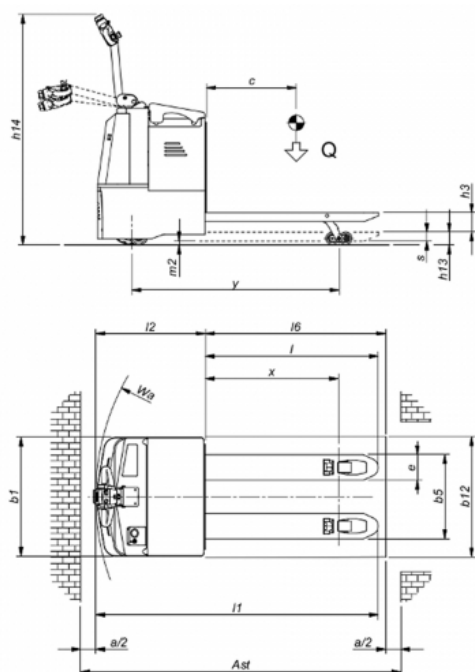


METALLIC/GALVANISED VERSION



SCALE/PRINTER

Type	Power pallet trucks	Class	Power pallet trucks for intensive use and heavy loads
Load capacity (Kg)	6000	Lifting capacity (mm)	130



### Carachteristics

	1.1	Manufacturer			SAMAG
Characteristics	1.2	Manufacturer's type designation			TM 60
	1.3	Drive: electric (battery or mains), diesel, petrol, fuel gas			Battery
	1.4	Operator type: hand, pedestrian, standing, seated, order-picker			pedestrian
	1.5	Load capacity/rated load	Q	t	6
	1.6	Load centre distance	C	mm	600
	1.8	Load distance, centre of drive axle to fork	x	mm	874 (1)
	1.9	Wheelbase	Y	mm	1383 (1)
Weight	2.1	Service weight (battery included)		Kg	830
	2.2	Axle loading, laden (front / rear)		Kg	1860 / 4970
	2.3	Axle loading, unladen (front / rear)		Kg	670 / 160
Wheels and frame	3.1	Tyres: solid rubber, superelastic, pneumatic, polyurethane			Vulkollan
	3.2	Tyre size, front		mm	310 x 90 / 150 x 50
	3.3	Tyre size, rear		mm	85x90
	3.5	Wheels, number front rear (x = driven wheels)			1X + 4/4
	3.6	Tread, front	b10	mm	673
	3.7	Tread, rear	b11	mm	360
	4.4	Lift	h3	mm	130
Dimensions	4.8	Seat height / stand height	h7	mm	135
	4.9	Height of tiller in drive position (min. / max.)	h14	mm	1150 / 1395
	4.15	Height of forks from ground	h13	mm	85
	4.19	Overall length	l1	mm	1887
	4.20	Lenght of face of forks	l2	mm	737
	4.21	Overall width	b1/b2	mm	845
	4.22	Fork dimensions	sl1ell	mm	70 x 200 x 1150
	4.25	External fork widths	b5	mm	570
	4.32	Ground clearance, centre of wheelbase	m2	mm	15
	4.34	Aisle width for pallets 800 x 1200 crossways	Ast	mm	2137
	4.35	Turning radius	Wa	mm	1611
Performance	5.1	Travel speed (laden / unladen)		Km/h	5 / 5
	5.2	Lift speed (laden / unladen)		m/s	0,02 / 0,07
	5.3	Lowering speed (laden / unladen)		m/s	0,11 / 0,05
	5.7	Gradeability (laden / unladen)		%	---
	5.8	Max. gradeability (laden / unladen)		%	3 / 17
Electric motor	6.1	Traction motor, power KB 60'		KW	2 AC
	6.2	Lifting motor, performance 15% ED		KW	2,2
		Steering motor		KW	0,3 AC
	6.3	Battery DIN 43531/35/36 A, B, C,			yes
	6.4	Tension / nominal capacity		V / Ah	24/320
	6.5	Battery weight (± 5%)		Kg	256
Other data	6.6	Energy consumption according To VDI cycle		kWh/h	-
	8.4	Sound level at the driver's ear according to DIN 10 053		dB/(A)	<70

Ast includes "a" (manoeuvring space) = 200 mm  
(1) With forks in rest position, it increases to 92 mm