

MAX 3

Order picker truck for quick and comfortable medium-high picking operations



EASY PICKING

MAX 3 by Samag is an order picker truck ideal for quick and comfortable medium-high picking operations, able to ensure high order picking performance and an excellent picking capacity by means of diagonal drive.

MAX 3 order picker truck by Samag is available with picking heights up to 8.300 mm.

NEW DRIVING ERGONOMICS

- **Electronic AC traction** and steering control connected via **CAN-bus**
- **180° steering angle** with progressive travel speed reduction according to the angle and **progressive travel speed reduction** according to the lifting height
- Possibility of choosing **three performance levels**: P1-P2-P3
- **Side access gates to the driver position** with 3 bars to facilitate the operator ascent and descent from the cabin
- Possibility of moving and lifting the **operator position** with side gates open up to 1.200 mm height
- Possibility of **adding accessories** (document holder, bottle holder).

✓ **LOAD CAPACITY UP TO 1.000 KG**

✓ **SPECIAL DIMENSIONS UPON REQUEST**

SOME OPTIONALS



LITHIUM BATTERY

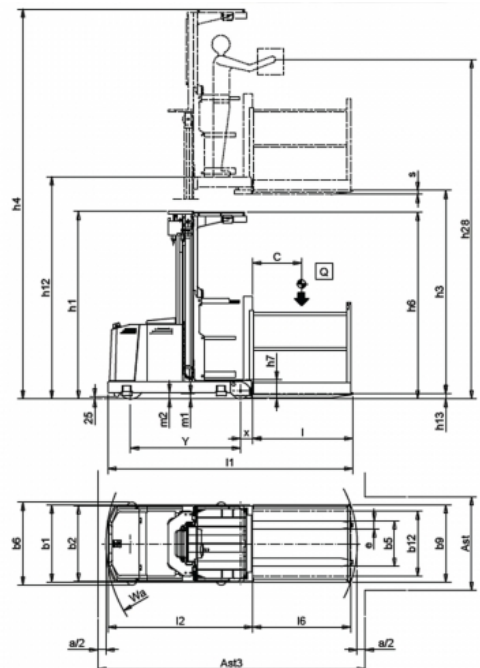
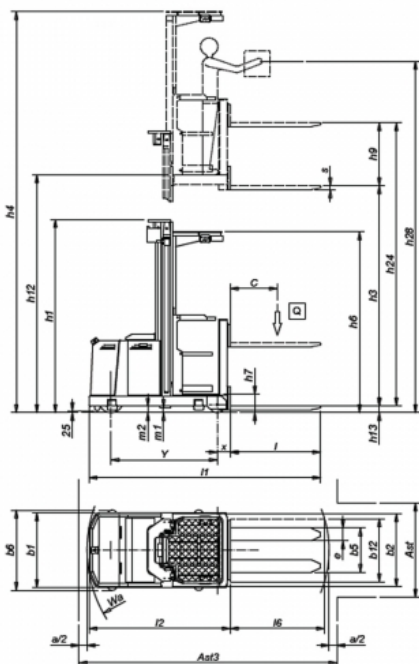


SCALE/PRINTER



USE IN COLD STORE

Type	Order pickers	Class	Ride-on order pickers with operator platform for normal-intensive use
Load capacity (Kg)	1000	Lifting capacity (mm)	6500



Characteristics

	1.1	Manufacturer			SAMAG	
					MAX 3-ac	MAX 3-ac SL
Characteristics	1.2	Manufacturer's type designation				
	1.3	Drive: electric (battery or mains), diesel, petrol, fuel gas				Electric
	1.4	Operator type: hand, pedestrian, standing, seated, order-picker				standing
	1.5	Load capacity/rated load	Q	t		1
	1.6	Load centre distance	C	mm		600
	1.8	Load distance, centre of drive axle to fork	x	mm	165	153
	1.9	Wheelbase con forche sollevate	Y	mm		1350
Weight	2.1	Service weight (± 5% - battery included)		Kg		2177 (1)
	2.2	Axle loading, laden (front / rear)		Kg		657 / 2610
	2.3	Axle loading, unladen (front / rear)		Kg		1209 / 968
Wheels and frame	3.1	Tyres: solid rubber, superelastic, pneumatic, polyurethane				Vulkollan
	3.2	Tyre size, front		mm		310 x 100
	3.3	Tyre size, rear		mm		200 x 105
	3.5	Wheels, number front rear (x = driven wheels)				1X - 2
	3.6	Tread, front	b10	mm		-
	3.7	Tread, rear	b11	mm		820/1066/1126 (2)+E1
	Dimensions	4.2	Height, mast lowered	h1	mm	(see table)
4.4		Lift	h3	mm	(see table)	(see table)
4.4.1		Total forks lift (h3+h9)	h24	mm	(see table)	-
4.5		Height, mast extended	h4	mm	(see table)	(see table)
4.7		Height of overhead guard (cabin)	h6	mm		2300
4.8		Seat height / stand height	h7	mm		235
4.11		Additional lift	h9	mm	800	-
4.14		Stand height, elevated	h12	mm	(see table)	(see table)
4.14.1		Height forks lowered (h12 + 1600 mm)	h28	mm	(see table)	(see table)
4.15		Height of forks from ground	h13	mm	85	65
4.19		Overall length	l1	mm	2945	3013
4.20		Length of face of forks	l2	mm	1795	1783
4.21		Overall width	b1/b2	mm	950-1200-1260 / 920	950-1200-1260 / 955
4.22		Fork dimensions	slell	mm	55 / 160 / 1150	35 / 100 / 1230
4.23		Fork carriage DIN 15 173, class/type A,B				Welded fork
4.24		Fork - carriage width	b3	mm		-
4.25		External fork widths	b5	mm	560 - 680	560-650 (4)
4.27		External width guide rollers	b6	mm		(see table)
4.31		Ground clearance, laden, below mast	m1	mm		75
4.32		Ground clearance, centre of wheelbase	m2	mm		65
4.34	Aisle width for pallets 800 x 1200 crossways	Ast	mm		(see table)	
4.35	Turning radius	Wa	mm		1655	
4.42	Front head aisle with pallet 800x1200 forked	Ast3	mm		(see table)	
4.46	Width side protection cage	b9	mm	-	955 / 1155 / 1355	
Performance	5.1	Travel speed (laden / unladen)		Km/h		9,5 / 9,5
	5.2	Lift speed (laden / unladen)		m/s		0,17 / 0,22
	5.3	Lowering speed (con / senza carico)		m/s		0,28 / 0,25
	5.7	Pendenza superabile KB 30° (con / senza carico)		%		0
	5.8	Max. gradeability (laden / unladen)		%		5
	5.9	Acceleration time (laden / unladen)		s		6,9 / 5,9
Electric motor	5.10	Service brake				Electric AC
	6.1	Traction motor, power KB 60'		KW		2 AC
	6.2	Lifting motor, performance 15% ED		KW		4
		Steering motor		KW		0,3 AC
	6.3	Battery DIN 43531/35/36 A, B, C,				yes
	6.4	Tension / nominal capacity		V / Ah		24 / 450 - 625
	6.5	Battery weight (± 5%)		Kg		373 - 457
6.6	Energy consumption according To VDI cycle		KWh/h		-	
Other data	8.1	Control type				Electric AC
	8.4	Sound level at the driver's ear according to DIN 10 053		dB/(A)		<70

(1) Valori riferiti ad "h3 3500"

(2) Valori con quota "b1" di 950, 1200 e 1100 mm

Overall dimensions

OVERALL DIMENSIONS OF LIFTING GROUPS

	h3	h24	h1	h4	h12	h28	b1	b6 min.
3000		3800	2310	5300	3235	4835	950	1020
3500		4300	2560	5800	3735	5335	950	1020
4000		4800	2810	6300	4235	5835	950	1020
4500		5300	3060	6800	4735	6335	1200	1270
5000		5800	3310	7300	5235	6835	1200	1270
5500		6300	3560	7800	5735	7335	1200	1270
6000		6800	3810	8300	6235	7835	1200	1270
6500		7300	4120	8800	6735	8335	1260	1290
7000		7800	4370	9300	7235	8835	1260	1290

Corridor dimensions

MAX 3 AC - DIMENSIONS OF WORKING AND FRONT HEAD AISLE

MAX 3 AC SL - DIMENSIONS OF WORKING AND FRONT HEAD AISLE

Pallet	Ast (3)			Ast3 (4)			svolta 90°			Pallet	Ast (3)			Ast3 (4)			svolta 90°		
	b1=950	b1=1200	b1=1260	b1=950	b1=1200	b1=1260	b1=950	b1=1200	b1=1260		b12 / l6	b1=950	b1=1200	b1=1260	b1=950	b1=1200	b1=1260	b1=950	b1=1200
800 / 800	1150	1400	1460	2900			1860	1945	1970	800 / 800	1155	1400	1460	2925			1870	1960	1980
1000 / 800	1200	1400	1460	2945			1895	1970	1990	1000 / 800	1355	1400	1460	2970			1965	1980	2005
1200 / 800	1400	1400	1460	2990			1990	1990	2015	1200 / 800	1555	1555	1555	3030			2065	2065	2065
800 / 1000	1150	1400	1460	3090			1950	2040	2060	800 / 1000	1155	1400	1460	3105			1960	2050	2070
1000 / 1000	1200	1400	1460	3125			1990	2060	2080	1000 / 1000	1355	1400	1460	3150			2055	2070	2090
1200 / 1000	1400	1400	1460	3165			2080	2080	2100	1200 / 1000	1555	1555	1555	3195			2150	2150	2150
800 / 1200	1150	1400	1460	3280			2045	2135	2155	800 / 1200	1155	1400	1460	3290			2055	2140	2165
1000 / 1200	1200	1400	1460	3310			2080	2150	2170	1000 / 1200	1355	1400	1460	3330			2145	2160	2180
1200 / 1200	1400	1400	1460	3350			2170	2170	2190	1200 / 1200	1555	1555	1555	3370			2235	2235	2235

Ast, Ast3 e svolta a 90° comprendono "a" (spazio di manovra) = 200 mm
 (3) Valori minimi per corridoi di lavoro con guide a terra
 (4) Valori minimi per corridoi di testata (i valori sono intesi fra i bordi di raccordo delle eventuali guide a terra)

Ast, Ast3 e svolta a 90° comprendono "a" (spazio di manovra) = 200 mm
 (3) Valori minimi per corridoi di lavoro con guide a terra
 (4) Valori minimi per corridoi di testata (i valori sono intesi fra i bordi di raccordo delle eventuali guide a terra)